

Glidermatic GRD™

Industrial Roller Door Opener



The Glidermatic™ opener is the first operator of its kind especially designed for continuous sheet curtain doors, available exclusively from Gliderol International Pty Ltd.

This uniquely engineered unit will provide you with an economic, dependable, high quality operator for doors up to 5.6 metres wide and 5.0 metres in height.

The Drive Unit remains the only operator available with orbiting drive motors fully housed within the coil of the door and it requires only minimal field installation time, as a result of this innovative design feature.

The Drive Unit may be factory fitted inside the coil of the door or retrofitted to an existing installed door and comes complete with emergency chain hoist.

Installation requires only an additional 75mm of side room to that of a manual push-up door or the same

space required for our direct or reduced gear ratio drive chain hoist.

Power supply required to the wall mounted Control Box is standard supply voltage single phase. All control circuits and wiring to the Drive Unit are a low 24 volt DC; a plug-in wire is supplied to connect the Drive Unit to the Control Box. The Drive Unit accommodates one or two 1/3 HP DC motor(s), according to door size. The Control Box features three buttons for the UP, DOWN and STOP functions providing convenient, safe and secure operation of the door.

Safety reversing the obstruction control is via the use of a PE Cell linked directly to the Control Box to interrupt the door function and by the use of Gliderol's™ patented obstruction detection system built into the control circuitry.

Manufactured by
Gliderol Garage Doors

A Division of Gliderol
International Pty Ltd
ABN 92 007 928 949

An Australian
Manufacturing Company

32 Jacobsen Crescent
Holden Hill SA 5088
Adelaide, South Australia

Telephone +61 8 261 9633
Facsimile +61 8 261 9700
Email sales@gliderol.com.au
website www.gliderol.com.au

Glidermatic GRD™

Industrial Roller Door Opener

The **Glidermatic™** has been tested by the Underwriters Laboratory and has been patented worldwide.

The Glidermatic™ operator's quality and dependability have been thoroughly tested and successfully proven with nearly twenty years of service in actual field use.

Drive Unit 1/3 HP DC Motor(s) are fixed to an end drum wheel and have special gear heads that project into and mesh with the main planetary gear housing which remains stationary for motor operation.

The drive force of the motor gear head rotates the motor(s), along with the drum wheel and door curtain, around the fixed planetary gear.

Door travel is controlled by open and close limit switches which are actuated by cam gears that are completely adjustable to suit door height. Easy access is provided. See detail A.

Diagram below right:
Glidermatic GRD™
features:

1. Drive Unit 1/3 HP DC motor(s)
2. Gear heads
3. Planetary gear housing
4. Drum wheel
5. Open and close limit switches
6. Cam gears
7. Emergency chain hoist
8. Plunger
9. Cut-out switch

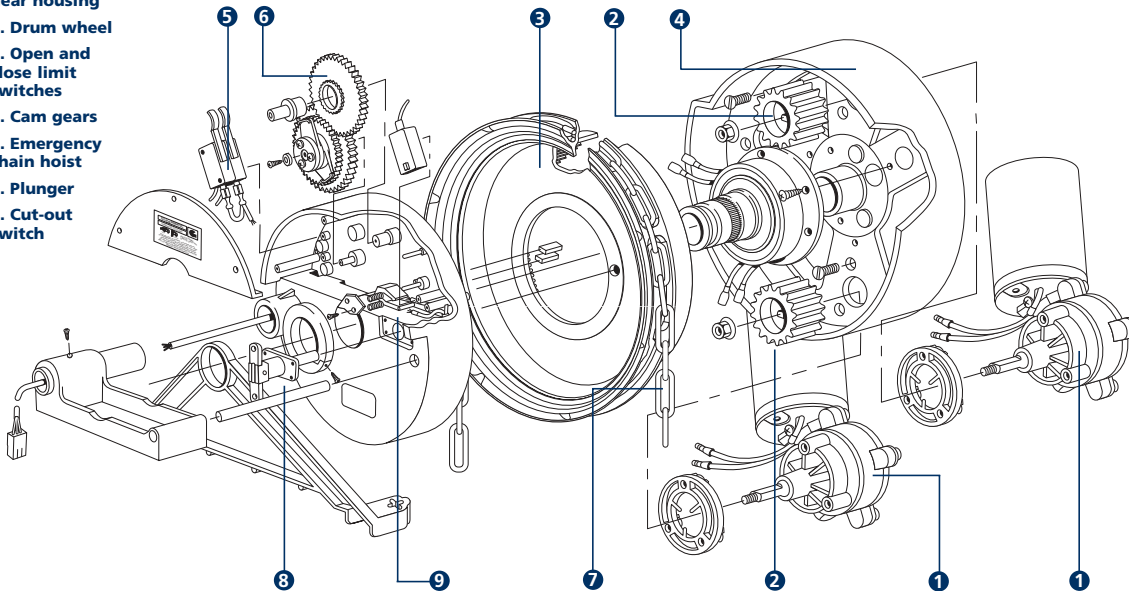
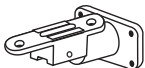
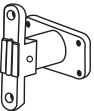


Diagram below:
Glidermatic GRD™
Red Pin Handle



Manual Operation



Glidermatic™

Door travel limit switch settings are not disturbed if door is switched to chain hoist operation, since the cam gears are rotated only by the actual travel of the door curtain. Settings are also preserved during a power failure.

Emergency Chain Hoist is moulded as part of the main planetary gear housing. In case of power failure, a simple lever action withdraws a plunger from the main planetary gear which then makes it connect directly to the coil of the door, which can now be operated by the chain hoist. A cut-out switch deactivates all power to the motor(s) while the lever is set to chain hoist operation.

Control Box is a fully insulated enclosure that contains the logic circuitry which includes overload protection. A three station push button with UP-DOWN-STOP is furnished in the control box as standard.

Minimal Field Installation is required for the control box and push button station, which is wall mounted in close proximity to the door.



Detail A: **End view of Drive Unit with access cover removed showing limit switches, cam gears and cut out switch. Also shown is the Manual emergency disconnect lever and the anchor block attached to wall bracket with dual anchor pins into the Drive Housing.**



Detail B: **Interior view of Dual 1/3 HP DC motors inside the coil of the door. Also shown is the chain hoist sheave which accepts welded chain and the chain guide.**

Australian Distributors International Manufacturers and Licensees

**Head Office
South Australia**
Gliderol Garage Doors Pty Ltd
32 Jacobsen Crescent
Holden Hill SA 5088
Telephone (08) 8261 9633
Facsimile (08) 8261 9700

Victoria
23 Kitchen Road
Dandenong VIC 3175
Telephone (03) 9793 5455
Facsimile (03) 9706 8492

New South Wales
Sydney
Gliderol Garage Doors Pty Ltd
45 Sammut Street
Smithfield NSW 2164
Telephone (02) 9725 1033
Facsimile (02) 9725 1115
Newcastle
Gliderol Garage Doors Pty Ltd
Unit 2-87 Glenwood Drive
Thornton NSW 2322
Telephone (02) 4966 8500
Facsimile (02) 4966 8511

Queensland
Gliderol Garage Doors Pty Ltd
45 Harvey Street
Eagle Farm QLD 4009
Telephone (07) 3868 2766
Facsimile (07) 3868 2760

Western Australia
Gliderol Garage Doors Pty Ltd
21 Prindville Drive
Wangara WA 6065
Telephone (08) 9409 3000
Facsimile (08) 9409 3200

Tasmania
Gliderol Garage Doors Pty Ltd
C/o 23 Kitchen Road
Dandenong VIC 3175
Telephone (03) 9793 5455
Facsimile (03) 9706 8492

United Kingdom
Gliderol Doors UK Ltd
1 Doxford Drive
South West Industrial Estate
Peterlee Co. Durham
Telephone 44 191 518 0455
Facsimile 44 191 518 0548

Singapore
Gliderol Doors (S) Pte Ltd
No 86 International Road
Singapore 629178
Telephone 65 266 6668
Facsimile 65 266 6866

Malaysia
Gliderol Doors (M) SDN BHD
No 49B 2nd Floor Jln SS15/8A
47500 Subang Jaya
Selangor Darul Ehsan, Malaysia
Telephone 7342350
Facsimile 7343217

**China
People's Republic of China**
Gliderol (Asia) Pte Ltd
No 20 Beimen Heliang
Quanzhou, Fujian Province
People's Republic of China
Telephone 595 2383838
Facsimile 595 2392388

United States
Gliderol International
Jim Pace
2317 Ridgewood Drive
Plano, Texas 75074
Telephone 1 972 423 9075
Facsimile 1 972 423 8735

Saudi Arabia
Al-Moosa Garage Doors
Al Hassa, Dhahran Street
PO Box 10070 Pin Code 31982
Telephone (03) 966 3 587 3660
Facsimile (03) 966 3 587 8050

Bahrain
Abbas Biljeek & Sons
PO Box 308
Manama, Bahrain
Telephone 973 401 444
Facsimile 973 401 333

United Arab Emirates
ADESCO
PO Box 43217, Abu Dhabi
United Arab Emirates
Telephone 9712-393 915
Facsimile 9712-393 965

Al Adsani & Partners
Electronic Doors
PO Box 1510
Doha Qatar
Telephone 974 4884 340
Facsimile 974 4884 336

India
Indo-Germa Products Ltd
No 14 Pattullous Road
Chennai 600 002
India
Telephone 91 44 852 0075
Facsimile 91 44 852 0070

**Taiwan
Republic of China**
Gliderol Taiwan Ltd
105 Chung Shing Road
277 Hsin Shing Street
Hsin Shing Tsun
Taoyuan Hsien
Taiwan
Telephone 886 3 323 9200
Facsimile 886 3 323 9161

Thailand
Gliderol Doors (Thai) Co. Ltd
24/32 Moo 6, Bangna-Trad Road,
Bangsaothong, Samutprakarn 10540
Thailand
Telephone (662) 740 02313
Facsimile (662) 740 0235



**GLIDEROL
GARAGE DOORS**

A Division of Gliderol
International Pty Ltd
ABN 92 007 928 949
An Australian
Manufacturing Company

Glidermatic GRD™
Industrial Roller Door Opener
Using technology smarter.